



AN ISO 9001  
CERTIFIED COMPANY

**TECHNO ELECTRO POWER  
INDUSTRIAL W.L.L.**

# **Cable Management System**



PRODUCT  
**CATALOGUE**



“At TEP Group International, we devise solutions that make a difference. Our safe, efficient, and reliable products are designed to improve the quality of life of our customers. Our unique capabilities make us the perfect players to revolutionize how we live, and we work towards that goal every day.”

## About Us

Established in 2004, TEP Group International started as a trading company in Bahrain and has become a global name in the manufacturing and distribution of high-quality electrical products and solutions in our field. We build trust with our clients, stakeholders and suppliers by maintaining a high-level business ethics and relationships.

With our center of operations located in the Kingdom of Bahrain and extended to the US and India, we represent several global and TEP brands including local and international government- approved electrical products distributed throughout the world to meet clients' obligations with the utmost confidence. For almost two decades, we have maintained our market reputation through our state-of-the-art manufacturing factory, boasting 4,000 sqm. of facilities situated locally and internationally.

Armed with professionally qualified team with a diverse background, we are able to innovate and improve processes to provide safe and sustainable products of high quality.

**Warranty Policy:** Warranted against defects arising out of manufacturing processes or use of defective raw materials for a period of 18 months from the date of supply or 12 months from the date of installation whichever is earlier. The company reserves the right to either replace or repair the defective items after ascertaining the facts through a detailed service report on usage of our products in normal conditions.

# TABLE OF CONTENT

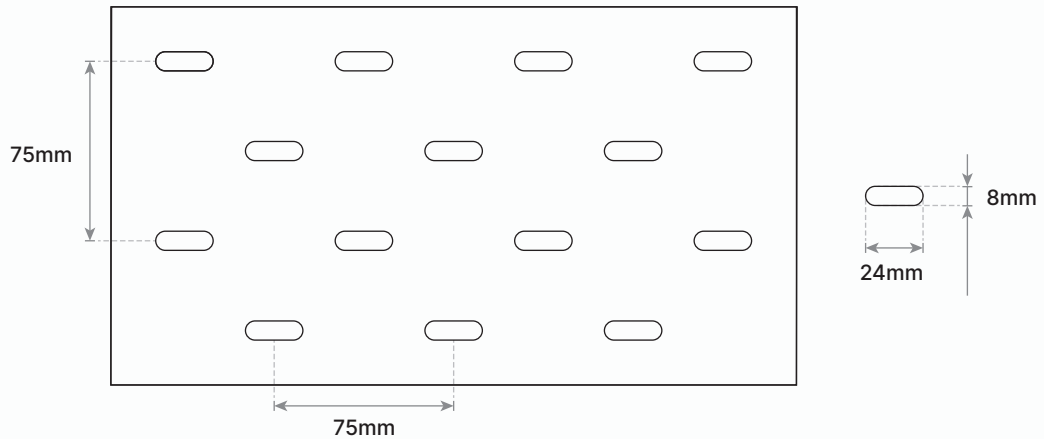
<b>• CONTENT .....</b>	<b>PAGE NO.</b>
<b>• INTRODUCTION .....</b>	<b>01</b>
<b>• ORDERING CODE DETAILS .....</b>	<b>03</b>
<b>• CABLE TRAY .....</b>	<b>04</b>
<b>• CABLE TRAY ACCESSORIES.....</b>	<b>05</b>
<b>• CABLE TRUNKING .....</b>	<b>10</b>
<b>• CABLE TRUNKING ACCESSORIES.....</b>	<b>12</b>
<b>• UNISTRUT (SUPPORT CHANNEL) .....</b>	<b>15</b>
<b>• APPROVALS .....</b>	<b>16</b>

# INTRODUCTION

## • Slotting Pattern Perforation Details

Techno Electro Power Cable Management System offers you a simple, inexpensive method of routing and supporting all types of light to heavy weight cables. Ideal for all types of commercial, industrial and government applications.

Available in different widths, heights, and lengths, complete line of fittings and accessories provide flexibility to meet installation requirements, also available in Hot Dip Galvanized Steel, built to BS EN standards.





## • Pre-Galvanized Zinc

### (Mill Galvanized, Hot Dip Mill Galvanized or Continuous Hot Dip Galvanized)

Pre-Galvanized steel is produced by coating coils of sheet steel with zinc by continuously rolling the material through molten zinc at the mills. This is also known as mill galvanized or hot dip mill galvanized. These coils are then slit to size and fabricated by roll forming, shearing, punching, or forming to produce pre-galvanized Cable Tray products (GI).

The G90 specification call for a coating of 90 ounces of zinc per square foot of steel. This results in a coating of 45 ounces per square foot on each side of the sheet. This is important when comparing this finish to hot dip galvanized after fabrication.

During fabrication, cut edge and welded areas are not normally zinc coated; however, the zinc near the uncoated metal becomes a sacrificial anode to protect the bare areas after short period of time.

To further insure a quality product, TPI welds all pre-galvanized Cable Trays with silicon bronze welding wire allowing only a small heat affected zone to be exposed. This small area quickly repairs itself by the same process as cut edges.

## • Hot Dip Galvanized After Fabrication

### (Hot Dip Galvanized or Batch Hot Dip Galvanized)

Hot Dip Galvanized after Fabrication Cable Tray products are fabricated from steel and then completely immersed in a bath of molten zinc. A metallic bond occurs resulting in a zinc coating that completely coats all surfaces, including edges and welds.

Another advantage of this method is coating thickness. Cable Trays Hot Dip Galvanized After Fabrication have a minimum thickness in accordance to ASTM A123 and BS 1461 (updated standard of BS 729).

The zinc thickness is controlled by several factors 2 of which are the amount of time each part is immersed in the molten zinc bath, as well as, the speed of dipping and removal.

The layer of zinc which bonds to steel provides a dual protection against corrosion. It protects first as an overall barrier coating. If this coating happens to be scratched or gouged, zinc's secondary defence is called upon to protect the steel by galvanic action.

Hot Dip Galvanized after Fabrication is recommended for prolonged outdoor exposure and will protect steel for many years in most outdoor environments and in many aggressive industrial environments.

# ORDERING CODE DETAILS

**CT - HD - I - 300 - 50 - 2**

**Product Type**  
• Cable Tray

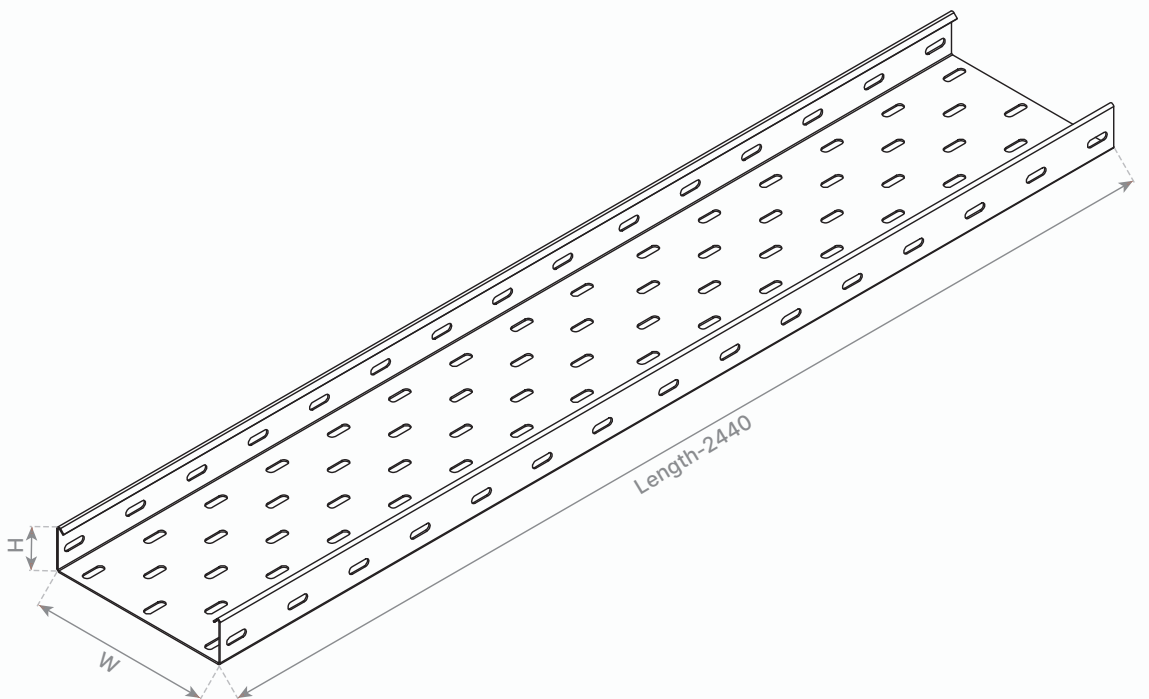
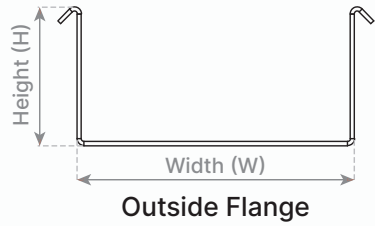
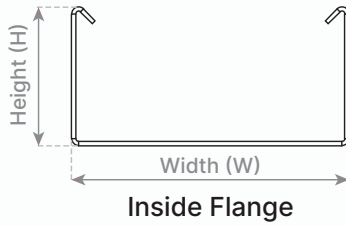
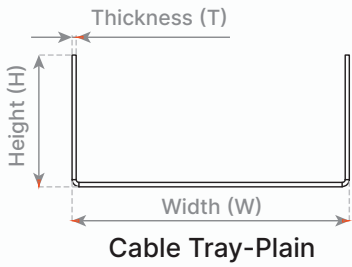
**Finishing**  
• Hot Dip Galvanized (HD)  
• Galvanized (GI)

**Type**  
• Plain (P)  
• Inside Flange (I)  
• Outside Flange (O)

**Thickness (T)**

**Height (H)**

**Width (W)**



# CABLE TRAY

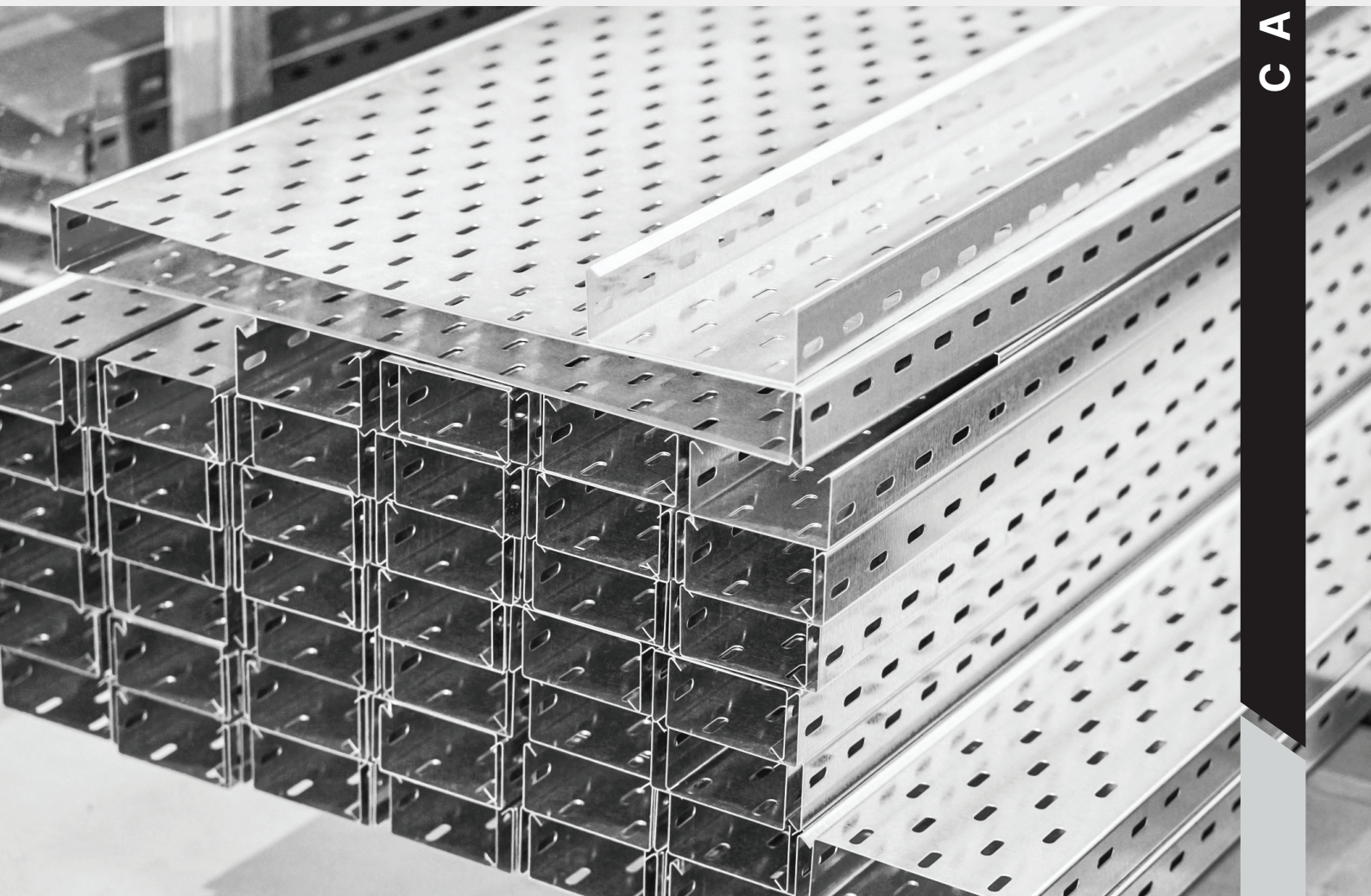
ORDERING CODE	SIZE-WxHxL (mm)	THICKNESS (mm)
CT-GI-I-50-50-1	50×50×2440	1
CT-GI-I-75-50-1	75×50×2440	1
CT-GI-I-100-50-1	100×50×2440	1
CT-GI-I-150-50-1	150×50×2440	1
CT-GI-I-200-50-1	200×50×2440	1
CT-GI-I-225-50-12	225×50×2440	1.2
CT-GI-I-250-50-12	250×50×2440	1.2
CT-GI-I-300-50-12	300×50×2440	1.2
CT-GI-I-400-50-15	400×50×2440	1.5
CT-GI-I-500-50-15	500×50×2440	1.5
CT-GI-I-600-50-15	600×50×2440	1.5
CT-GI-I-700-50-2	700×50×2440	2
CT-GI-I-800-50-2	800×50×2440	2
CT-GI-I-900-50-2	900×50×2440	2
CT-GI-I-1000-50-2	1000×50×2440	2

## REMARKS

Customized sizes are available.

Standard Couplers size is 180mm x side height of Tray.

Standard Hardware for coupling - M6 Bolt and nut with Washer.

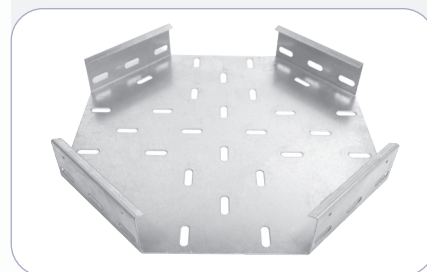


# CABLE TRAY ACCESSORIES

## 1. Cross Horizontal

ORDERING CODE	SIZE-WxH (mm)	THICKNESS (mm)
CT-CH-GI-I-50-50-1	50×50	1
CT-CH-GI-I-75-50-1	75×50	1
CT-CH-GI-I-100-50-1	100×50	1
CT-CH-GI-I-150-50-1	150×50	1
CT-CH-GI-I-200-50-1	200×50	1
CT-CH-GI-I-225-50-12	225×50	1.2
CT-CH-GI-I-250-50-12	250×50	1.2
CT-CH-GI-I-300-50-12	300×50	1.2
CT-CH-GI-I-400-50-15	400×50	1.5
CT-CH-GI-I-500-50-15	500×50	1.5
CT-CH-GI-I-600-50-15	600×50	1.5
CT-CH-GI-I-700-50-2	700×50	2
CT-CH-GI-I-800-50-2	800×50	2
CT-CH-GI-I-900-50-2	900×50	2
CT-CH-GI-I-1000-50-2	1000×50	2

**REMARKS**  
Customized sizes are available.



## 2. Tee Horizontal

ORDERING CODE	SIZE-WxH (mm)	THICKNESS (mm)
CT-TH-GI-I-50-50-1	50×50	1
CT-TH-GI-I-75-50-1	75×50	1
CT-TH-GI-I-100-50-1	100×50	1
CT-TH-GI-I-150-50-1	150×50	1
CT-TH-GI-I-200-50-1	200×50	1
CT-TH-GI-I-225-50-12	225×50	1.2
CT-TH-GI-I-250-50-12	250×50	1.2
CT-TH-GI-I-300-50-12	300×50	1.2
CT-TH-GI-I-400-50-15	400×50	1.5
CT-TH-GI-I-500-50-15	500×50	1.5
CT-TH-GI-I-600-50-15	600×50	1.5
CT-TH-GI-I-700-50-2	700×50	2
CT-TH-GI-I-800-50-2	800×50	2
CT-TH-GI-I-900-50-2	900×50	2
CT-TH-GI-I-1000-50-2	1000×50	2

**REMARKS**  
Customized sizes are available.





### 3. Bend 90

ORDERING CODE	SIZE-WxH (mm)	THICKNESS (mm)
CT-B90-GI-I-50-50-1	50×50	1
CT-B90-GI-I-75-50-1	75×50	1
CT-B90-GI-I-100-50-1	100×50	1
CT-B90-GI-I-150-50-1	150×50	1
CT-B90-GI-I-200-50-1	200×50	1
CT-B90-GI-I-225-50-12	225×50	1.2
CT-B90-GI-I-250-50-12	250×50	1.2
CT-B90-GI-I-300-50-12	300×50	1.2
CT-B90-GI-I-400-50-15	400×50	1.5
CT-B90-GI-I-500-50-15	500×50	1.5
CT-B90-GI-I-600-50-15	600×50	1.5
CT-B90-GI-I-700-50-2	700×50	2
CT-B90-GI-I-800-50-2	800×50	2
CT-B90-GI-I-900-50-2	900×50	2
CT-B90-GI-I-1000-50-2	1000×50	2

**REMARKS**

Customized sizes are available.



### 4. Bend 45

ORDERING CODE	SIZE-WxH (mm)	THICKNESS (mm)
CT-B45-GI-I-50-50-1	50×50	1
CT-B45-GI-I-75-50-1	75×50	1
CT-B45-GI-I-100-50-1	100×50	1
CT-B45-GI-I-150-50-1	150×50	1
CT-B45-GI-I-200-50-1	200×50	1
CT-B45-GI-I-225-50-12	225×50	1.2
CT-B45-GI-I-250-50-12	250×50	1.2
CT-B45-GI-I-300-50-12	300×50	1.2
CT-B45-GI-I-400-50-15	400×50	1.5
CT-B45-GI-I-500-50-15	500×50	1.5
CT-B45-GI-I-600-50-15	600×50	1.5
CT-B45-GI-I-700-50-2	700×50	2
CT-B45-GI-I-800-50-2	800×50	2
CT-B45-GI-I-900-50-2	900×50	2
CT-B45-GI-I-1000-50-2	1000×50	2

**REMARKS**

Customized sizes are available.



## 5. Reducer Straight

ORDERING CODE	SIZE-W1xW2xH (mm)	THICKNESS (mm)
CT-RS-GI-I-100-50-50-1	100x50x50	1
CT-RS-GI-I-100-75-50-1	100x75x50	1
CT-RS-GI-I-150-100-50-1	150x100x50	1
CT-RS-GI-I-200-150-50-1	200x150x50	1
CT-RS-GI-I-225-150-50-12	225x150x50	1.2
CT-RS-GI-I-250-200-50-12	250x200x50	1.2
CT-RS-GI-I-300-250-50-12	300x250x50	1.2
CT-RS-GI-I-400-300-50-12	400x300x50	1.2
CT-RS-GI-I-500-400-50-15	500x400x50	1.5
CT-RS-GI-I-600-500-50-15	600x500x50	1.5
CT-RS-GI-I-700-600-50-15	700x600x50	1.5
CT-RS-GI-I-800-700-50-2	800x700x50	2
CT-RS-GI-I-900-800-50-2	900x800x50	2
CT-RS-GI-I-1000-900-50-2	1000x900x50	2
CT-RS-GI-I-1200-1000-50-2	1200x1000x50	2

### REMARKS

Width-1 = Higher size  
Width-2 = Lower size

•  
Customized sizes are available.



## 6. Reducer Left

ORDERING CODE	SIZE-W1xW2xH (mm)	THICKNESS (mm)
CT-RL-GI-I-100-50-50-1	100x50x50	1
CT-RL-GI-I-100-75-50-1	100x75x50	1
CT-RL-GI-I-150-100-50-1	150x100x50	1
CT-RL-GI-I-200-150-50-1	200x150x50	1
CT-RL-GI-I-225-150-50-12	225x150x50	1.2
CT-RL-GI-I-250-200-50-12	250x200x50	1.2
CT-RL-GI-I-300-250-50-12	300x250x50	1.2
CT-RL-GI-I-400-300-50-12	400x300x50	1.2
CT-RL-GI-I-500-400-50-15	500x400x50	1.5
CT-RL-GI-I-600-500-50-15	600x500x50	1.5
CT-RL-GI-I-700-600-50-15	700x600x50	1.5
CT-RL-GI-I-800-700-50-2	800x700x50	2
CT-RL-GI-I-900-800-50-2	900x800x50	2
CT-RL-GI-I-1000-900-50-2	1000x900x50	2
CT-RL-GI-I-1200-1000-50-2	1200x1000x50	2

### REMARKS

Width-1 = Higher size  
Width-2 = Lower size

•  
Customized sizes are available.



## 7. Reducer Right

ORDERING CODE	SIZE-W1xW2xH (mm)	THICKNESS (mm)
CT-RR-GI-I-100-50-50-1	100×50×50	1
CT-RR-GI-I-100-75-50-1	100×75×50	1
CT-RR-GI-I-150-100-50-1	150×100×50	1
CT-RR-GI-I-200-150-50-1	200×150×50	1
CT-RR-GI-I-225-150-50-12	225×150×50	1.2
CT-RR-GI-I-250-200-50-12	250×200×50	1.2
CT-RR-GI-I-300-250-50-12	300×250×50	1.2
CT-RR-GI-I-400-300-50-12	400×300×50	1.2
CT-RR-GI-I-500-400-50-15	500×400×50	1.5
CT-RR-GI-I-600-500-50-15	600×500×50	1.5
CT-RR-GI-I-700-600-50-15	700×600×50	1.5
CT-RR-GI-I-800-700-50-2	800×700×50	2
CT-RR-GI-I-900-800-50-2	900×800×50	2
CT-RR-GI-I-1000-900-50-2	1000×900×50	2
CT-RR-GI-I-1200-1000-50-2	1200×1000×50	2

### REMARKS

Width-1 = Higher size  
Width-2 = Lower size

• Customized sizes are available.



## 8. External Riser

ORDERING CODE	SIZE-WxH (mm)	THICKNESS (mm)
CT-ER-GI-I-50-50-1	50×50	1
CT-ER-GI-I-75-50-1	75×50	1
CT-ER-GI-I-100-50-1	100×50	1
CT-ER-GI-I-150-50-1	150×50	1
CT-ER-GI-I-200-50-1	200×50	1
CT-ER-GI-I-225-50-12	225×50	1.2
CT-ER-GI-I-250-50-12	250×50	1.2
CT-ER-GI-I-300-50-12	300×50	1.2
CT-ER-GI-I-400-50-15	400×50	1.5
CT-ER-GI-I-500-50-15	500×50	1.5
CT-ER-GI-I-600-50-15	600×50	1.5
CT-ER-GI-I-700-50-2	700×50	2
CT-ER-GI-I-800-50-2	800×50	2
CT-ER-GI-I-900-50-2	900×50	2
CT-ER-GI-I-1000-50-2	1000×50	2

### REMARKS

Customized sizes are available.

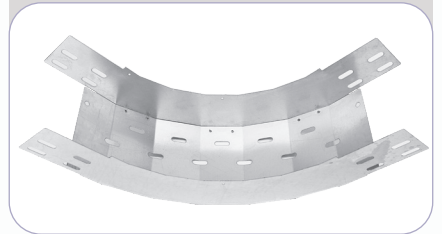


## 9. Internal Riser

ORDERING CODE	SIZE-WxH (mm)	THICKNESS (mm)
CT-IR-GI-I-50-50-1	50×50	1
CT-IR-GI-I-75-50-1	75×50	1
CT-IR-GI-I-100-50-1	100×50	1
CT-IR-GI-I-150-50-1	150×50	1
CT-IR-GI-I-200-50-1	200×50	1
CT-IR-GI-I-225-50-12	225×50	1.2
CT-IR-GI-I-250-50-12	250×50	1.2
CT-IR-GI-I-300-50-12	300×50	1.2
CT-IR-GI-I-400-50-15	400×50	1.5
CT-IR-GI-I-500-50-15	500×50	1.5
CT-IR-GI-I-600-50-15	600×50	1.5
CT-IR-GI-I-700-50-2	700×50	2
CT-IR-GI-I-800-50-2	800×50	2
CT-IR-GI-I-900-50-2	900×50	2
CT-IR-GI-I-1000-50-2	1000×50	2

### REMARKS

Customized sizes are available.





## CABLE TRUNKING

ORDERING CODE	SIZE-WxHxL (mm)	THICKNESS (mm)
CTR-GI-50-50-1	50×50×2440	1
CTR-GI-75-50-1	75×50×2440	1
CTR-GI-75-75-1	75×75×2440	1
CTR-GI-100-50-1	100×50×2440	1
CTR-GI-100-75-1	100×75×2440	1
CTR-GI-100-100-12	100×100×2440	1.2
CTR-GI-150-50-12	150×50×2440	1.2
CTR-GI-150-75-12	150×75×2440	1.2
CTR-GI-150-100-12	150×100×2440	1.2
CTR-GI-200-50-15	200×50×2440	1.5
CTR-GI-200-75-15	200×75×2440	1.5
CTR-GI-200-100-15	200×100×2440	1.5
CTR-GI-250-100-2	250×100×2440	2
CTR-GI-300-100-2	300×100×2440	2

### REMARKS

Customized sizes are available.

• Standard Couplers size is 180mm x side height of Tray.

• Standard Hardware for coupling - M6 Bolt and nut with Washer.



## 1. Single Partition

ORDERING CODE	SIZE-WxHxL (mm)	THICKNESS (mm)
CTRSP-GI-50-50-1	50×50×2440	1
CTRSP-GI-75-50-1	75×50×2440	1
CTRSP-GI-75-75-1	75×75×2440	1
CTRSP-GI-100-50-1	100×50×2440	1
CTRSP-GI-100-75-1	100×75×2440	1
CTRSP-GI-100-100-12	100×100×2440	1.2
CTRSP-GI-150-50-12	150×50×2440	1.2
CTRSP-GI-150-75-12	150×75×2440	1.2
CTRSP-GI-150-100-12	150×100×2440	1.2
CTRSP-GI-200-50-15	200×50×2440	1.5
CTRSP-GI-200-75-15	200×75×2440	1.5
CTRSP-GI-200-100-15	200×100×2440	1.5
CTRSP-GI-250-100-2	250×100×2440	2
CTRSP-GI-300-100-2	300×100×2440	2

**REMARKS**  
Customized sizes are available.



## 2. Double Partition

ORDERING CODE	SIZE-WxHxL (mm)	THICKNESS (mm)
CTRDP-GI-50-50-1	50×50×2440	1
CTRDP-GI-75-50-1	75×50×2440	1
CTRDP-GI-75-75-1	75×75×2440	1
CTRDP-GI-100-50-1	100×50×2440	1
CTRDP-GI-100-75-1	100×75×2440	1
CTRDP-GI-100-100-12	100×100×2440	1.2
CTRDP-GI-150-50-12	150×50×2440	1.2
CTRDP-GI-150-75-12	150×75×2440	1.2
CTRDP-GI-150-100-12	150×100×2440	1.2
CTRDP-GI-200-50-15	200×50×2440	1.5
CTRDP-GI-200-75-15	200×75×2440	1.5
CTRDP-GI-200-100-15	200×100×2440	1.5
CTRDP-GI-250-100-2	250×100×2440	2
CTRDP-GI-300-100-2	300×100×2440	2

**REMARKS**  
Customized sizes are available.



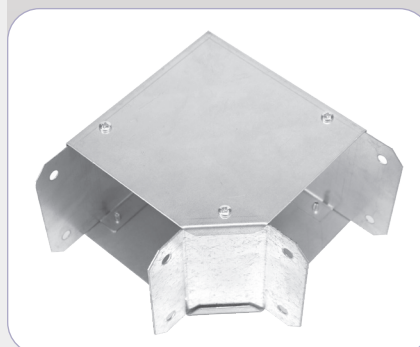
# CABLE TRUNKING ACCESSORIES

## 1. 90 Bend

ORDERING CODE	SIZE-WxH (mm)	THICKNESS (mm)
CTR-B90-GI-50-50-1	50×50	1
CTR-B90-GI-75-50-1	75×50	1
CTR-B90-GI-75-75-1	75×75	1
CTR-B90-GI-100-50-1	100×50	1
CTR-B90-GI-100-75-1	100×75	1
CTR-B90-GI-100-100-12	100×100	1.2
CTR-B90-GI-150-50-12	150×50	1.2
CTR-B90-GI-150-75-12	150×75	1.2
CTR-B90-GI-150-100-12	150×100	1.2
CTR-B90-GI-200-50-15	200×50	1.5
CTR-B90-GI-200-75-15	200×75	1.5
CTR-B90-GI-200-100-15	200×100	1.5
CTR-B90-GI-250-100-2	250×100	2
CTR-B90-GI-300-100-2	300×100	2

### REMARKS

Customized sizes are available.

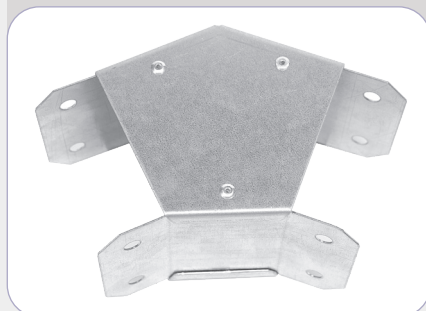


## 2. 45 Bend

ORDERING CODE	SIZE-WxH (mm)	THICKNESS (mm)
CTR-B45-GI-50-50-1	50×50	1
CTR-B45-GI-75-50-1	75×50	1
CTR-B45-GI-75-75-1	75×75	1
CTR-B45-GI-100-50-1	100×50	1
CTR-B45-GI-100-75-1	100×75	1
CTR-B45-GI-100-100-12	100×100	1.2
CTR-B45-GI-150-50-12	150×50	1.2
CTR-B45-GI-150-75-12	150×75	1.2
CTR-B45-GI-150-100-12	150×100	1.2
CTR-B45-GI-200-50-15	200×50	1.5
CTR-B45-GI-200-75-15	200×75	1.5
CTR-B45-GI-200-100-15	200×100	1.5
CTR-B45-GI-250-100-2	250×100	2
CTR-B45-GI-300-100-2	300×100	2

### REMARKS

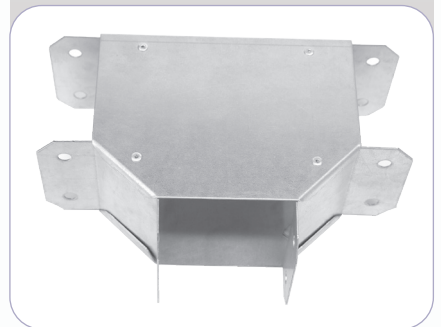
Customized sizes are available.



### 3. Tee Horizontal

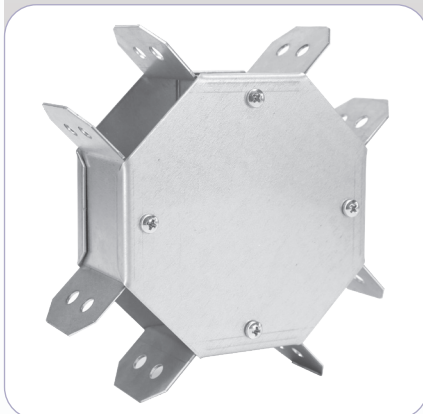
ORDERING CODE	SIZE-WxH (mm)	THICKNESS (mm)
CTR-TH-GI-50-50-1	50×50	1
CTR-TH-GI-75-50-1	75×50	1
CTR-TH-GI-75-75-1	75×75	1
CTR-TH-GI-100-50-1	100×50	1
CTR-TH-GI-100-75-1	100×75	1
CTR-TH-GI-100-100-12	100×100	1.2
CTR-TH-GI-150-50-12	150×50	1.2
CTR-TH-GI-150-75-12	150×75	1.2
CTR-TH-GI-150-100-12	150×100	1.2
CTR-TH-GI-200-50-15	200×50	1.5
CTR-TH-GI-200-75-15	200×75	1.5
CTR-TH-GI-200-100-15	200×100	1.5
CTR-TH-GI-250-100-2	250×100	2
CTR-TH-GI-300-100-2	300×100	2

**REMARKS**  
Customized sizes are available.



### 4. Cross Horizontal

**REMARKS**  
Customized sizes are available.



ORDERING CODE	SIZE-WxH (mm)	THICKNESS (mm)
CTR-CH-GI-50-50-1	50×50	1
CTR-CH-GI-75-50-1	75×50	1
CTR-CH-GI-75-75-1	75×75	1
CTR-CH-GI-100-50-1	100×50	1
CTR-CH-GI-100-75-1	100×75	1
CTR-CH-GI-100-100-12	100×100	1.2
CTR-CH-GI-150-50-12	150×50	1.2
CTR-CH-GI-150-75-12	150×75	1.2
CTR-CH-GI-150-100-12	150×100	1.2
CTR-CH-GI-200-50-15	200×50	1.5
CTR-CH-GI-200-75-15	200×75	1.5
CTR-CH-GI-200-100-15	200×100	1.5
CTR-CH-GI-250-100-2	250×100	2
CTR-CH-GI-300-100-2	300×100	2



## 5. Straight Reducer

ORDERING CODE	SIZE-W1xW2xH (mm)	THICKNESS (mm)
CTR-SR-GI-100-50-50-1	100×50×50	1
CTR-SR-GI-100-75-50-1	100×75×50	1
CTR-SR-GI-100-75-75-1	100×75×75	1
CTR-SR-GI-150-100-50-1	150×100×50	1
CTR-SR-GI-150-100-75-1	150×100×75	1
CTR-SR-GI-150-100-100-12	150×100×100	1.2
CTR-SR-GI-200-100-50-12	200×100×50	1.2
CTR-SR-GI-200-150-50-12	200×150×50	1.2
CTR-SR-GI-200-150-75-12	200×150×75	1.2
CTR-SR-GI-250-200-50-15	250×200×50	1.5
CTR-SR-GI-250-200-75-15	250×200×75	1.5
CTR-SR-GI-250-200-100-15	250×200×100	1.5
CTR-SR-GI-300-200-100-2	300×200×100	2
CTR-SR-GI-300-250-100-2	300×250×100	2

### REMARKS

Customized sizes are available.

•  
Width-1 = Higher size,  
Width-2 = Lower size



 Prima  
Power

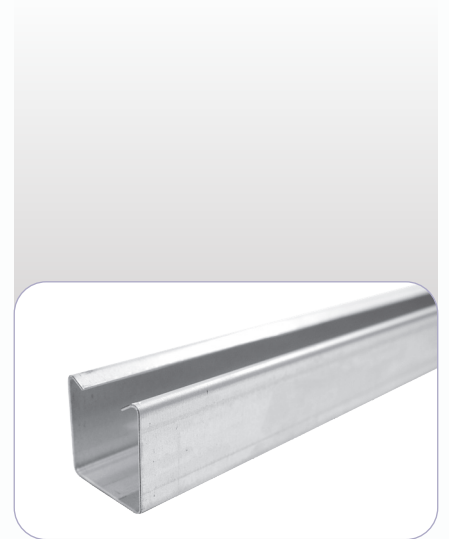




## UNISTRUT (SUPPORT CHANNEL)

### 1. Plain

ORDERING CODE	SIZE-WxHxL (mm)	THICKNESS (mm)
USP-GI-41-21-12-2440	41x21x2440	1.2
USP-GI-41-21-15-2440	41x21x2440	1.5
USP-GI-41-21-2-2440	41x21x2440	2
USP-GI-41-41-12-2440	41x41x2440	1.2
USP-GI-41-41-15-2440	41x41x2440	1.5
USP-GI-41-41-2-2440	41x41x2440	2




### 2. Slotted



ORDERING CODE	SIZE-WxHxL (mm)	THICKNESS (mm)
USS-GI-41-21-12-2440	41x21x2440	1.2
USS-GI-41-21-15-2440	41x21x2440	1.5
USS-GI-41-21-2-2440	41x21x2440	2
USS-GI-41-41-12-2440	41x41x2440	1.2
USS-GI-41-41-15-2440	41x41x2440	1.5
USS-GI-41-41-2-2440	41x41x2440	2





هيئة الكهرباء والماء  
Electricity & Water Authority

Approval ID:  
**242224**

### EQUIPMENT TYPE APPROVAL

Distribution Customer Use

We hereby confirm that below detailed Equipment is in compliance with the latest relevant regulations and standards, therefore it is **Approved** to be used in Distribution Customer Installation for five years, where expiry date is due the Approval Holder shall apply for renewal if needed.

Approval Details	
Approval ID: 242224	Approval Holder: <i>Techno Electro Power Industrial S.P.C.</i>
Approval Type: <i>Distribution Customer Use</i>	Valid Till: <i>10/02/2029</i>
Equipment Details	
Category: <i>Cable Management System</i>	Trademark: <i>TEP</i>
Description: <i>Annexure-A</i>	Designation: <i>Annexure-A</i>
Manufacturer Details	
Name: <i>Techno Electro Power Industrial WLL</i>	Country of Origin: <i>Bahrain</i>


**Comments:**  
*EDD Requirements Fulfilled, The Approval encompasses all associated cable managemet system accessories.*

**Signature:**



10/03/2024 06:27 PM  
**Ebrahim Khalil Ebrahim**  
Director, Electricity Distribution

**Validation:**



This approval is signed electronically, validation of the approval can be confirmed through scanning the QR Code or visiting EWA Official Website.

- The Directorate reserves the right to deny or disconnect electricity supply in case of any failure to comply with any compulsory provision of the latest relevant regulations and standards enforced by the Kingdom.
- The Directorate retains the right to publish a censored copy of the approval.
- The Approval Holder is responsible for retaining all relevant information and documents for five years from issuance date.
- The Approval Holder is responsible to present the approval in full without any omissions upon request.
- The Approval Holder is responsible to ensure that an approved Equipment is manufactured, tested, and delivered in accordance with the latest relevant regulation and standards.
- The Installation Contractor is responsible to ensure that an approved Equipment is installed in accordance with the latest relevant regulation and standards.
- The Installation Contractor is responsible to validate the approval using above referenced QR Code.

CERTIFICATE  
◆ CERTIFICADO  
◆ СЕРТИФИКАТ  
◆ CERTIFICATE  
◆ CERTIFIKAT

## CERTIFICATE

This is to Certify that the Management System of

### TECHNO ELECTRO POWER INDUSTRIAL W.L.L.

BUILDING 765, ROAD 4811, BLOCK 948, LHASAY  
AREA, KINGDOM OF BAHRAIN

has been found to conform to the Quality Management System standard:

### ISO 9001:2015


This certificate is valid for the following scope of operations:


**Manufacturing of Techno Electro Power“ PVC Conduits & Fittings, LV Panels, Distribution Boards, Control Panels, GI Electrical Cable Tray, GI Electrical Cable Trunk, Switch Disconnecter and Changeover in Enclosure.**

**:: Certificate No :: BH56861A**

Date of initial registration	Date of this Certificate	Surv. audit on or before / Certificate expiry	Recertification Due
17 April 2024	17 April 2024	16 April 2025	16 April 2027

This Certificate remains valid subject to satisfactory surveillance audits.







---

Director

For verification and updated information concerning the content certificate visit to <http://www.staunchly.com/bahrain/certificate.html>

This Certificate is the property of Staunchly Management & System Services Limited and shall be returned immediately when returned

**STAUNCHLY MANAGEMENT AND SYSTEM SERVICES LIMITED**  
International Office, Luluyni'dh Business Centre, 43 Middle Hill Gate, Shekport Canal Manchester, England-SK1 3DG  
Phone: +44 7404829557  
Company Registered in England with Company Number 11453663

S/MS/INDU/REP/001





## **TECHNO ELECTRO POWER INDUSTRIAL W.L.L.**

(An ISO 9001 Certified Company)

Building 765, Road 4811, Block 948, Lhassay Area, Kingdom of Bahrain

**M +973 3975 9175 • T +973 1761 0046**

 [info@tepgi.com](mailto:info@tepgi.com)  [www.tepgi.com](http://www.tepgi.com)

