



TEP

AN ISO 9001
CERTIFIED COMPANY

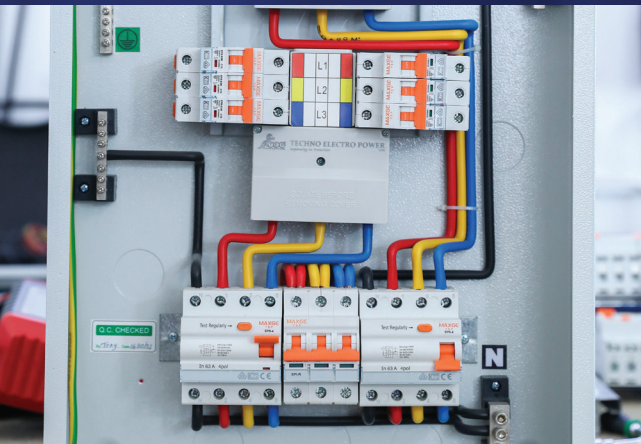
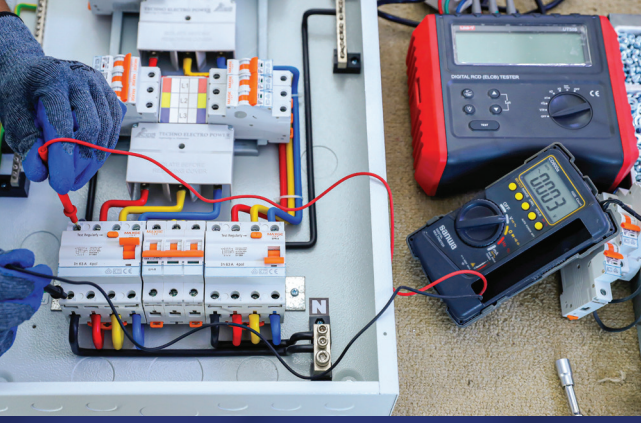
**TECHNO ELECTRO POWER
INDUSTRIAL W.L.L.**

**Distribution Boards
LV Control Panels**

MAXGE

Intelligence beyond vision

PRODUCT
CATALOGUE



“At TEP Group International, we devise solutions that make a difference. Our safe, efficient, and reliable products are designed to improve the quality of life of our customers. Our unique capabilities make us the perfect players to revolutionize how we live, and we work towards that goal every day.”

About Us

Established in 2004, TEP Group International started as a trading company in Bahrain and has become a global name in the manufacturing and distribution of high-quality electrical products and solutions in our field. We build trust with our clients, stakeholders and suppliers by maintaining a high-level business ethics and relationships.

With our center of operations located in the Kingdom of Bahrain and extended to the US and India, we represent several global and TEP brands including local and international government-approved electrical products distributed throughout the world to meet clients' obligations with the utmost confidence. For almost two decades, we have maintained our market reputation through our state-of-the-art manufacturing factory, boasting 4,000 sqm. of facilities situated locally and internationally.

Armed with professionally qualified team with a diverse background, we are able to innovate and improve processes to provide safe and sustainable products of high quality.

Live Smart

www.tepgi.com

Warranty Policy: Warranted against defects arising out of manufacturing processes or use of defective raw materials for a period of 18 months from the date of supply or 12 months from the date of installation whichever is earlier. The company reserves the right to either replace or repair the defective items after ascertaining the facts through a detailed service report on usage of our products in normal conditions.

Contents

1. Distribution Boards (DB).....	1
2. SPN MCB DB Non-Split.....	2
3. SPN MCB DB Split.....	3
4. TPN MCB DB Non-Split.....	4
5. TPN MCB DB Split.....	5
6. TPN MCB DB Split (3 Row DBS).....	6
7. Approvals & Certifications.....	7



Distribution Boards (DB)

MAXGE
Intelligence beyond vision



Salient Features

- Aesthetically designed in compliance with latest standards
- Wide range of sheet-steel DBs up to 18ways
- SPN, TPN MCB Distribution Board
- Degree of protection IP30 as Standard
- IP31, 42 , IP43 & 55 available (non-Standard sizes)
- Surface & flush mounting
- Powder coated – Corrosion & scratch resistant
- Detachable gland plate (optional)
- Adequate knock-outs on all sides
- Generous wiring space
- Clear circuit identification
- Supplied complete with busbar, earth & neutral bars
- Suitable for Ambient temperature 55 Degree



Technical Details

Voltage	240 V AC for SPN, 415 V for TPN DBs
Busbar Rating	63A/100A/125A
No. of Ways	4, 6, 8, 10, 12, 14, 18ways
Mounting	Surface/Flush
Dielectric Strength	2.5kV RMS AC for 1 Min
Mounting Arrangement	35mm DIN Rail for MCBs, RCCBs (SPN) 125A Pan-tray assembly For TPN DB



All Dimensions are in Millimetre (mm)

SPN MCB DB Non-Split



Salient Features

- Single door
- IP30 protection
- Standard color RAL-7035
- Hinged full door with sliding lock
- Knock outs at Top, Bottom, Sides and back of enclosure
- Surface or Flush mounted covers
- Generous wiring space, adequate for cable glands
- Superior powder coated finish for better protection against heat & dust (Powder coating thickness of more than 60 microns)
- Detachable gland plates (OPTIONAL)
- Complete with copper phase comb-bar, earth bar & neutral bars



Ordering Details

Code	Item	H	W	D
5114004	4 WAY SPN	200	270	90
5114003	6 WAY SPN	200	300	90
5114002	8 WAY SPN	200	340	90
5114005	10 WAY SPN	200	380	90
5114006	12 WAY SPN	200	420	90



All Dimensions are in Millimetre (mm)

SPN MCB DB Split

Salient Features

- Single door
- IP30 protection
- Standard color RAL-7035
- Hinged full door with sliding lock
- Knock outs at Top, Bottom, Sides and back of enclosure
- Surface or Flush mounted covers
- Generous wiring space, adequate for cable glands
- Superior powder coated finish for better protection against heat & dust (Powder coating thickness of more than 60 microns)
- Detachable gland plates (OPTIONAL)
- Complete with copper phase comb-bar, earth bar & neutral bars



Ordering Details

Code	Item	H	W	D
5114015	2+2 WAY SPN	330	230	90
5114007	4+2 WAY SPN	330	230	90
5114008	6+2 WAY SPN	350	270	90
5114009	6+4 WAY SPN	350	270	90
5114010	8+4 WAY SPN	350	300	90
5114011	8+6 WAY SPN	350	300	90
5114012	10+4 WAY SPN	350	340	90
5114000	10+6 WAY SPN	350	340	90



All Dimensions are in Millimetre (mm)

TPN MCB DB Non-Split

MAXGE
Intelligence beyond vision

Salient Features

- Single door
- IP30 protection
- Standard color RAL-7035
- Hinged full door with sliding lock
- Knock outs at Top, Bottom, Sides and back of enclosure
- Surface or Flush mounted covers
- Generous wiring space, adequate for cable glands
- Superior powder coated finish for better protection against heat & dust (Powder coating thickness of more than 60 microns)
- Detachable gland plates (OPTIONAL)
- With 125A Busbar Modular Interior



Ordering Details

Code	Item	H	W	D
5126014	2 WAY TPN	380	390	100
5126006	4 WAY TPN	430	390	100
5126016	6 WAY TPN	480	390	100
5126017	8 WAY TPN	540	390	100
5126007	10 WAY TPN	600	390	100
5126018	12 WAY TPN	650	390	100



All Dimensions are
in Millimetre (mm)

TPN MCB DB Split

MAXGE
Intelligence beyond vision



Salient Features

- Single door
- IP30 protection
- Standard color RAL-7035
- Hinged full door with sliding lock
- Knock outs at Top, Bottom, Sides and back of enclosure
- Surface or Flush mounted covers
- Generous wiring space, adequate for cable glands
- Superior powder coated finish for better protection against heat & dust (Powder coating thickness of more than 60 microns)
- Detachable gland plates (OPTIONAL)
- With 125A Busbar Modular Interior

Ordering Details

Code	Item	H	W	D
5126012	2+2 WAY TPN	550	390	100
5126010	4+2 WAY TPN	600	390	100
5126019	4+4 WAY TPN	650	390	100
5126005	6+2 WAY TPN	650	390	100
5126009	6+4 WAY TPN	700	390	100
5126033	6+6 WAY TPN	760	390	100
5126011	8+2 WAY TPN	700	390	100
5126022	8+4 WAY TPN	760	390	100
5126013	8+6 WAY TPN	820	390	100
5123052	8+8 WAY TPN	870	390	100
5126035	10+2 WAY TPN	760	390	100
5126008	10+4 WAY TPN	820	390	100
5126000	10+6 WAY TPN	870	390	100



All Dimensions are in Millimetre (mm)

TPN MCB DB Split (3 Row DBS)



Salient Features

- Single door
- IP30 protection
- Standard color RAL-7035
- Hinged full door with sliding lock
- Knock outs at Top, Bottom, Sides and back of enclosure
- Surface or Flush mounted covers
- Generous wiring space, adequate for cable glands
- Superior powder coated finish for better protection against heat & dust (Powder coating thickness of more than 60 microns)
- Detachable gland plates (OPTIONAL)
- Complete with Copper phase comb-bar, earth bar & neutral bars



Ordering Details

Code	Item	H	W	D
5140000	2+2+2 WAY TPN	750	450	100
5140001	4+4+4 WAY TPN	900	450	100
5140002	6+6+6 WAY TPN	1060	450	100
5140003	8+8+8 WAY TPN	1230	450	100
5140004	4+2+2 WAY TPN	795	450	100
5140005	4+4+2 WAY TPN	850	450	100
5140006	6+6+2 WAY TPN	960	450	100
5140007	6+6+4 WAY TPN	1015	450	100
5140008	6+4+2 WAY TPN	910	450	100
5140009	6+4+4 WAY TPN	960	450	100
5140010	8+6+2 WAY TPN	1015	450	100
5140011	8+4+2 WAY TPN	960	450	100
5140012	8+4+4 WAY TPN	1010	450	100
5140013	8+8+4 WAY TPN	1110	450	100
5140014	8+8+6 WAY TPN	1175	450	100
5140015	10+4+2 WAY TPN	1015	450	100
5140016	10+4+4 WAY TPN	1070	450	100
5140017	10+6+4 WAY TPN	1121	450	100
5140018	10+8+4 WAY TPN	1175	450	100



All Dimensions are in Millimetre (mm)

Approvals & Certifications



إدارة توزيع الكهرباء
Electricity Distribution Directorate

5340/6.910/723/22/FSM/220270
May 12, 2022

FAX

Techno Electro Power Industrial W.L.L. Mail: info@tepiindustrial.com
 Attn.: Mr. Bibin Bhasi Director

Dear Sir,

SUBJECT: EQUIPMENT APPROVAL
TPN 100A (10+6 WAY) DISTRIBUTION BOARD
MAKE: M/s TECHNO ELECTRO POWER INDUSTRIAL W.L.L, BH

Name of the Project: General Use

This has reference to your letter TEP/EWA/020042022, along with attached technical documents. We have reviewed the submittals, and accordingly the 100A (10+6Way),500A, 50Hz TPN Distribution Board described in Type Test Certificate Ref: ASTA-TYPE-0001177 from M/s Techno Electro Power Industrial W.L.L incorporating Functional Units from M/s Maxge Electric is **Considered as Approved.**

Note: the conformity of any other assemblies of the same Distribution Board shall be the authorized assembler sole responsibility, which shall ensure its compliance with the latest relevant regulations and standards.

The above approval is subject to the following:

- 1) The approval for the pertinent items is valid for five years only.
- 2) It is the responsibility of the local agent to ensure the standards and specifications of the above approved articles.

www.ewa.bh
 P.O. Box 2, Tel: (+973) 17991999, Fax: (+973) 17728466 هاتف: ١٧٩٩١٩٩٩ - فاكس: ١٧٧٢٨٤٦٦

إدارة توزيع الكهرباء
Electricity Distribution Directorate

5340/6.910/744/22/FSM/220353
June 21st, 2022

FAX

Techno Electro Power Industrial W.L.L. Mail: info@tepiindustrial.com
 Attn.: Mr. Bibin Bhasi Director

Dear Sir,

SUBJECT: EQUIPMENT APPROVAL
100A SPN DISTRIBUTION BOARD
MAKE: M/s TECHNO ELECTRO POWER INDUSTRIAL W.L.L, BH

Name of the Project: General Use

This has reference to your letter TEP/EWA/17022022, along with attached technical documents. We have reviewed the submittals, and accordingly the 100A, 230V, (10+6Way) SPN Distribution Board described in Type Test Certificate Ref: ASTA-TYPE-0001175 from M/s Techno Electro Power Industrial W.L.L, Bahrain incorporating Functional Units from M/s Maxge Electric is **Considered as Approved.**

Note: the conformity of any other assemblies of the same type of Distribution Board shall be the authorized assembler sole responsibility, which shall ensure its compliance with the latest relevant regulations and standards.

The above approval is subject to the following:

- 1) The approval for the pertinent items is valid for five years only.
- 2) It is the responsibility of the local agent to ensure the standards and specifications of the above approved articles.

www.ewa.bh
 P.O. Box 2, Tel: (+973) 17991999, Fax: (+973) 17728466 هاتف: ١٧٩٩١٩٩٩ - فاكس: ١٧٧٢٨٤٦٦

Total Quality. Assured.

ASTA TYPE CERTIFICATE

VERIFICATION OF TEST

Project No: G104669077LCS002 **Certificate No:** ASTA-TYPE-0001175

Applicant: Techno Electro Power Industrial W.L.L, Building No. 765, Road 4811, Block No. 948, Lhasay Area, Manama, Kingdom of Bahrain.

Apparatus: 230V/500V/4kV (U_i/U_o/U_m), 50Hz switchgear and controlgear assembly incorporating a single-phase horizontal busbar system with brass neutral link system, with one incoming 2P isolator unit, two 2P ELCB units, 16 SP outgoing MCB units and a brass link protective circuit.

Manufactured By: Techno Electro Power Industrial W.L.L, Building No. 765, Road 4811, Block No. 948, Lhasay Area, Manama, Kingdom of Bahrain.

Test Report No: 2007.22.02

Designation: 100A (10+6 Way) SPN Distribution Board

The apparatus which is representative of the designation, supplied drawings and photographs has been evaluated in accordance with:

IEC 61439-3: Edition 1.0, 2012-02, clauses 10.2 to 10.5 & 10.9 to 10.13

Verifications with reference to the tests listed in Annex D of IEC 61439-3: Edition 2.0, 2011-08

1: Strength of material and parts	6/7/8: No verification by testing required
2: Degree of protection of enclosures	9: Dielectric properties
3: Clearances	10: Temperature-rise limits
4: Creepage distances	11: Short-circuit withstand strength
5: Protection against electric shock and integrity of protective circuits	12: Electromagnetic compatibility (EMC)
	13: Mechanical operation

The results are shown in the record of tests attached hereto. The values obtained and the general performance is considered to comply with the above Standard(s) and to justify the ratings assigned by the manufacturer as stated on the ratings page(s) of this Certificate. This Certificate applies only to the apparatus tested. Responsibility for conformity of any apparatus having the same or other designations rests with the Manufacturer.

010

Certification Engineer
 Abdul Majid

Certification Officer
 Robert Hayward

11th February 2022
 Date

This Certificate is for the exclusive use of Intertek's client and is provided pursuant to the agreement between Intertek and its Client. Intertek's responsibility and liability are limited to the terms and conditions of the agreement. Intertek assumes no liability to any party, other than the Client, in connection with this agreement. No civil, criminal or other damages are recoverable by the use of this Certificate. Any use of the material name or one of its marks for the sale or advertisement of the tested material, product or service must first be approved in writing by Intertek.

Intertek Page 1 of 5 TF-ASTATYPE-02 14 May 2021

Total Quality. Assured.

ASTA TYPE CERTIFICATE

VERIFICATION OF TEST

Project No: G104669077LCS004 **Certificate No:** ASTA-TYPE-0001177

Applicant: Techno Electro Power Industrial W.L.L, Building No. 765, Road 4811, Block No. 948, Lhasay Area, Manama, Kingdom of Bahrain.

Apparatus: 415V/500V/4kV (U_i/U_o/U_m), 50Hz switchgear and controlgear assembly incorporating a three-phase vertical busbar system with brass neutral link system, with one incoming 3P isolator unit, two 4P ELCB units, 45 SP outgoing MCB units, 1 TP outgoing MCB unit and a brass link protective circuit.

Manufactured By: Techno Electro Power Industrial W.L.L, Building No. 765, Road 4811, Block No. 948, Lhasay Area, Manama, Kingdom of Bahrain.

Test Report No: 2007.22.04

Designation: 100A (10+6 Way)

The apparatus which is representative of the designation, supplied drawings and photographs has been evaluated in accordance with:

IEC 61439-3: Edition 1.0, 2012-02, clauses 10.2 to 10.5 & 10.9 to 10.13

Verifications with reference to the tests listed in Annex D of IEC 61439-3: Edition 2.0, 2011-08

1: Strength of material and parts	6/7/8: No verification by testing required
2: Degree of protection of enclosures	9: Dielectric properties
3: Clearances	10: Temperature-rise limits
4: Creepage distances	11: Short-circuit withstand strength
5: Protection against electric shock and integrity of protective circuits	12: Electromagnetic compatibility (EMC)
	13: Mechanical operation

The results are shown in the record of tests attached hereto. The values obtained and the general performance is considered to comply with the above Standard(s) and to justify the ratings assigned by the manufacturer as stated on the ratings page(s) of this Certificate. This Certificate applies only to the apparatus tested. Responsibility for conformity of any apparatus having the same or other designations rests with the Manufacturer.

010

Certification Engineer
 Abdul Majid

Certification Officer
 Robert Hayward

11th February 2022
 Date

This Certificate is for the exclusive use of Intertek's client and is provided pursuant to the agreement between Intertek and its Client. Intertek's responsibility and liability are limited to the terms and conditions of the agreement. Intertek assumes no liability to any party, other than the Client, in connection with this agreement. No civil, criminal or other damages are recoverable by the use of this Certificate. Any use of the material name or one of its marks for the sale or advertisement of the tested material, product or service must first be approved in writing by Intertek.

Intertek Page 1 of 5 TF-ASTATYPE-02 14 May 2021



Dimensions & Diagram

Please contact your nearest TEP sales office for drawings in printable format.



TECHNO ELECTRO POWER INDUSTRIAL W.L.L.
Building 765, Road 4811, Block 948, Lhassay Area, Kingdom of Bahrain
M +973 3975 9175 • T +973 7709 0218

 info@tepgi.com  www.tepgi.com