



AN ISO 9001
CERTIFIED COMPANY

**TECHNO ELECTRO POWER
INDUSTRIAL W.L.L.**

Cable Management System



PRODUCT
CATALOGUE



“At TEP Group International, we devise solutions that make a difference. Our safe, efficient, and reliable products are designed to improve the quality of life of our customers. Our unique capabilities make us the perfect players to revolutionize how we live, and we work towards that goal every day.”

About Us

Established in 2004, TEP Group International started as a trading company in Bahrain and has become a global name in the manufacturing and distribution of high-quality electrical products and solutions in our field. We build trust with our clients, stakeholders and suppliers by maintaining a high-level business ethics and relationships.

With our center of operations located in the Kingdom of Bahrain and extended to the US and India, we represent several global and TEP brands including local and international government- approved electrical products distributed throughout the world to meet clients’ obligations with the utmost confidence. For almost two decades, we have maintained our market reputation through our state-of-the-art manufacturing factory, boasting 4,000 sqm. of facilities situated locally and internationally.

Armed with professionally qualified team with a diverse background, we are able to innovate and improve processes to provide safe and sustainable products of high quality.

Warranty Policy: Warranted against defects arising out of manufacturing processes or use of defective raw materials for a period of 18 months from the date of supply or 12 months from the date of installation whichever is earlier. The company reserves the right to either replace or repair the defective items after ascertaining the facts through a detailed service report on usage of our products in normal conditions.

TABLE OF CONTENT

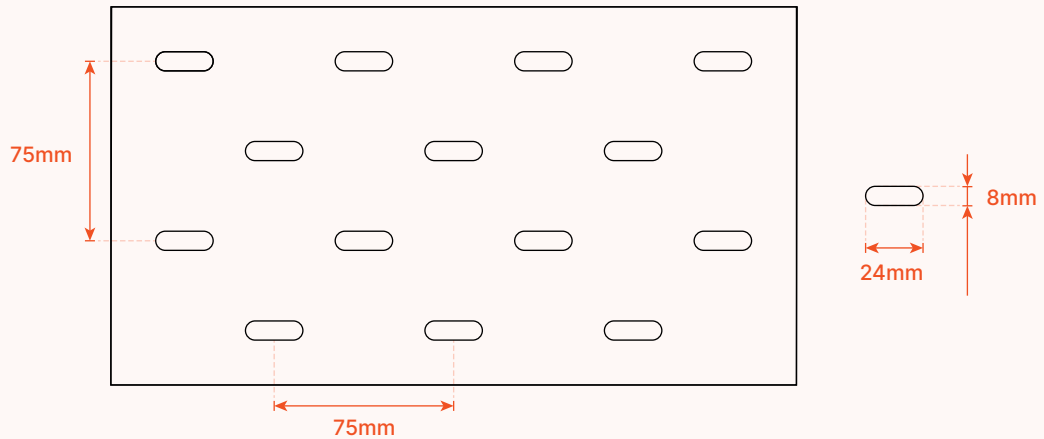
• CONTENT	PAGE NO.
• INTRODUCTION	01
• ORDERING CODE DETAILS	03
• CABLE TRAY	04
• CABLE TRAY ACCESSORIES.....	05
• CABLE TRUNKING	10
• CABLE TRUNKING ACCESSORIES.....	12
• UNISTRUT (SUPPORT CHANNEL)	15
• APPROVALS	16

INTRODUCTION

• Slotting Pattern Perforation Details

Techno Electro Power Cable Management System offers you a simple, inexpensive method of routing and supporting all types of light to heavy weight cables. Ideal for all types of commercial, industrial and government applications.

Available in different widths, heights, and lengths, complete line of fittings and accessories provide flexibility to meet installation requirements, also available in Hot Dip Galvanized Steel, built to BS EN standards.





• Pre-Galvanized Zinc

(Mill Galvanized, Hot Dip Mill Galvanized or Continuous Hot Dip Galvanized)

Pre-Galvanized steel is produced by coating coils of sheet steel with zinc by continuously rolling the material through molten zinc at the mills. This is also known as mill galvanized or hot dip mill galvanized. These coils are then slit to size and fabricated by roll forming, shearing, punching, or forming to produce pre-galvanized Cable Tray products (GI).

The G90 specification call for a coating of 90 ounces of zinc per square foot of steel. This results in a coating of 45 ounces per square foot on each side of the sheet. This is important when comparing this finish to hot dip galvanized after fabrication.

During fabrication, cut edge and welded areas are not normally zinc coated; however, the zinc near the uncoated metal becomes a sacrificial anode to protect the bare areas after short period of time.

To further insure a quality product, TPI welds all pre-galvanized Cable Trays with silicon bronze welding wire allowing only a small heat affected zone to be exposed. This small area quickly repairs itself by the same process as cut edges.

• Hot Dip Galvanized After Fabrication

(Hot Dip Galvanized or Batch Hot Dip Galvanized)

Hot Dip Galvanized after Fabrication Cable Tray products are fabricated from steel and then completely immersed in a bath of molten zinc. A metallic bond occurs resulting in a zinc coating that completely coats all surfaces, including edges and welds.

Another advantage of this method is coating thickness. Cable Trays Hot Dip Galvanized After Fabrication have a minimum thickness in accordance to ASTM A123 and BS 1461 (updated standard of BS 729).

The zinc thickness is controlled by several factors 2 of which are the amount of time each part is immersed in the molten zinc bath, as well as, the speed of dipping and removal.

The layer of zinc which bonds to steel provides a dual protection against corrosion. It protects first as an overall barrier coating. If this coating happens to be scratched or gouged, zinc's secondary defence is called upon to protect the steel by galvanic action.

Hot Dip Galvanized after Fabrication is recommended for prolonged outdoor exposure and will protect steel for many years in most outdoor environments and in many aggressive industrial environments.

ORDERING CODE DETAILS

CT - HD - I - 300 - 50 - 2

Product Type
 • Cable Tray

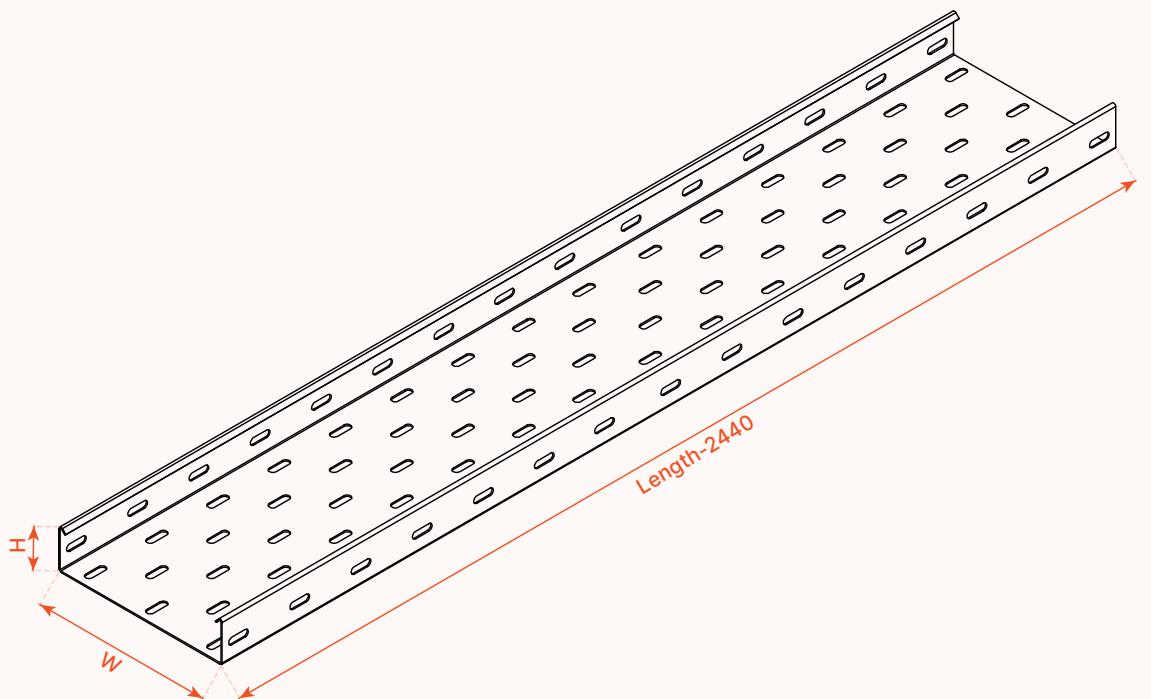
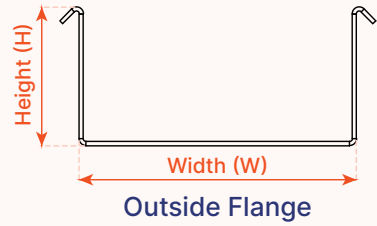
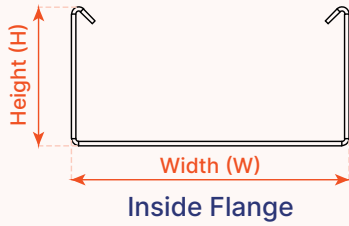
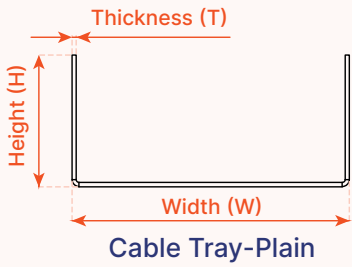
Finishing
 • Hot Dip Galvanized (HD)
 • Galvanized (GI)

Type
 • Plain (P)
 • Inside Flange (I)
 • Outside Flange (O)

Thickness (T)

Height (H)

Width (W)



CABLE TRAY

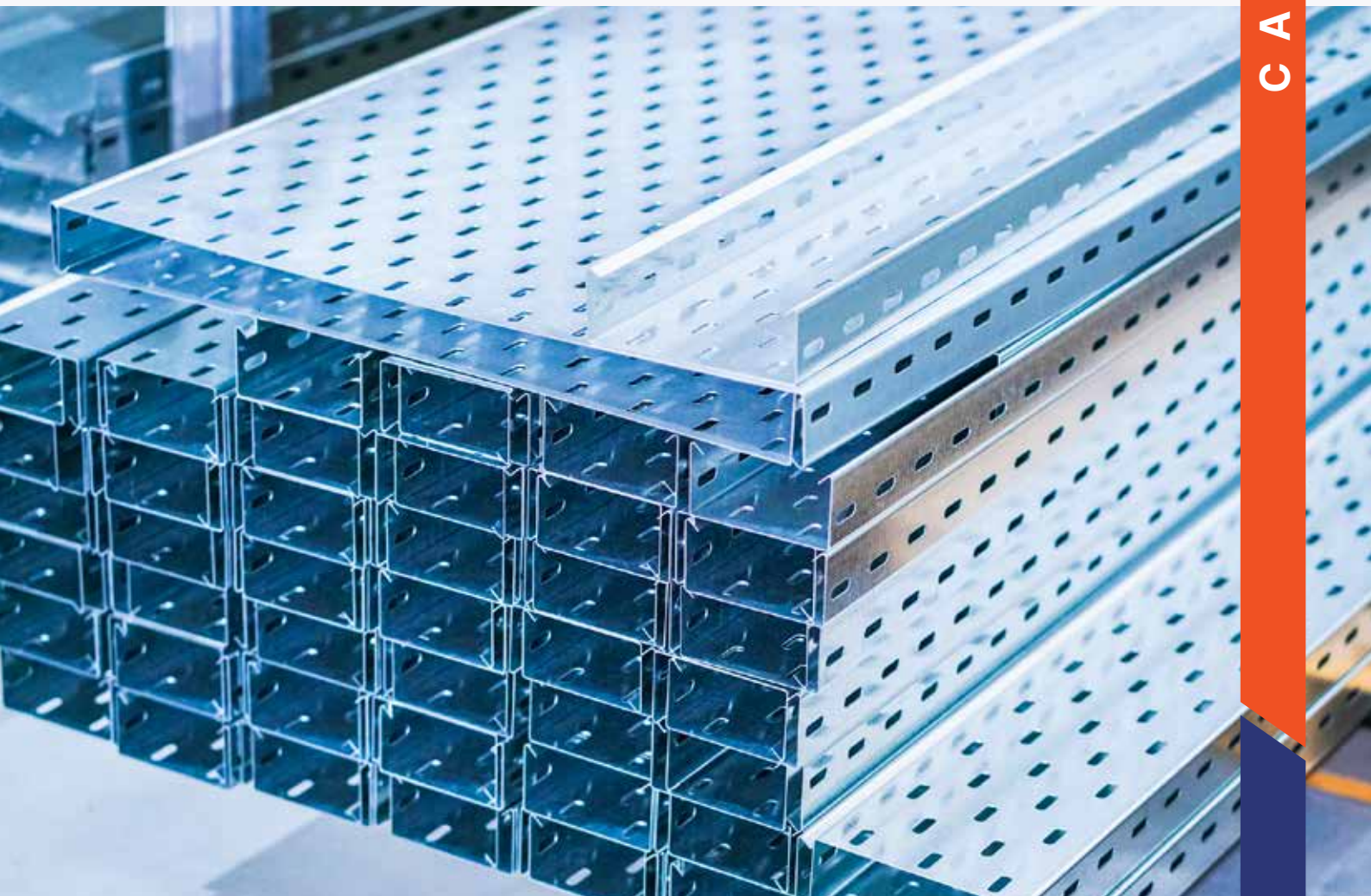
ORDERING CODE	SIZE-WxHxL (mm)	THICKNESS (mm)
CT-GI-I-50-50-1	50×50×2440	1
CT-GI-I-75-50-1	75×50×2440	1
CT-GI-I-100-50-1	100×50×2440	1
CT-GI-I-150-50-1	150×50×2440	1
CT-GI-I-200-50-1	200×50×2440	1
CT-GI-I-225-50-12	225×50×2440	1.2
CT-GI-I-250-50-12	250×50×2440	1.2
CT-GI-I-300-50-12	300×50×2440	1.2
CT-GI-I-400-50-15	400×50×2440	1.5
CT-GI-I-500-50-15	500×50×2440	1.5
CT-GI-I-600-50-15	600×50×2440	1.5
CT-GI-I-700-50-2	700×50×2440	2
CT-GI-I-800-50-2	800×50×2440	2
CT-GI-I-900-50-2	900×50×2440	2
CT-GI-I-1000-50-2	1000×50×2440	2

REMARKS

Customized sizes are available.

Standard Couplers size is 180mm x side height of Tray.

Standard Hardware for coupling - M6 Bolt and nut with Washer.

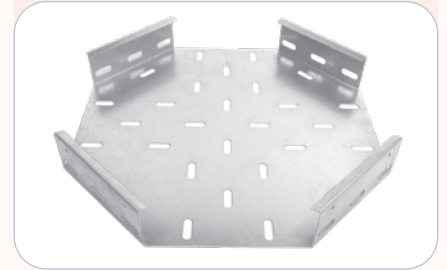


CABLE TRAY ACCESSORIES

1. Cross Horizontal

ORDERING CODE	SIZE-WxH (mm)	THICKNESS (mm)
CT-CH-GI-I-50-50-1	50×50	1
CT-CH-GI-I-75-50-1	75×50	1
CT-CH-GI-I-100-50-1	100×50	1
CT-CH-GI-I-150-50-1	150×50	1
CT-CH-GI-I-200-50-1	200×50	1
CT-CH-GI-I-225-50-12	225×50	1.2
CT-CH-GI-I-250-50-12	250×50	1.2
CT-CH-GI-I-300-50-12	300×50	1.2
CT-CH-GI-I-400-50-15	400×50	1.5
CT-CH-GI-I-500-50-15	500×50	1.5
CT-CH-GI-I-600-50-15	600×50	1.5
CT-CH-GI-I-700-50-2	700×50	2
CT-CH-GI-I-800-50-2	800×50	2
CT-CH-GI-I-900-50-2	900×50	2
CT-CH-GI-I-1000-50-2	1000×50	2

REMARKS
Customized sizes are available.



2. Tee Horizontal

ORDERING CODE	SIZE-WxH (mm)	THICKNESS (mm)
CT-TH-GI-I-50-50-1	50×50	1
CT-TH-GI-I-75-50-1	75×50	1
CT-TH-GI-I-100-50-1	100×50	1
CT-TH-GI-I-150-50-1	150×50	1
CT-TH-GI-I-200-50-1	200×50	1
CT-TH-GI-I-225-50-12	225×50	1.2
CT-TH-GI-I-250-50-12	250×50	1.2
CT-TH-GI-I-300-50-12	300×50	1.2
CT-TH-GI-I-400-50-15	400×50	1.5
CT-TH-GI-I-500-50-15	500×50	1.5
CT-TH-GI-I-600-50-15	600×50	1.5
CT-TH-GI-I-700-50-2	700×50	2
CT-TH-GI-I-800-50-2	800×50	2
CT-TH-GI-I-900-50-2	900×50	2
CT-TH-GI-I-1000-50-2	1000×50	2

REMARKS
Customized sizes are available.



3. Bend 90

ORDERING CODE	SIZE-WxH (mm)	THICKNESS (mm)
CT-B90-GI-I-50-50-1	50×50	1
CT-B90-GI-I-75-50-1	75×50	1
CT-B90-GI-I-100-50-1	100×50	1
CT-B90-GI-I-150-50-1	150×50	1
CT-B90-GI-I-200-50-1	200×50	1
CT-B90-GI-I-225-50-12	225×50	1.2
CT-B90-GI-I-250-50-12	250×50	1.2
CT-B90-GI-I-300-50-12	300×50	1.2
CT-B90-GI-I-400-50-15	400×50	1.5
CT-B90-GI-I-500-50-15	500×50	1.5
CT-B90-GI-I-600-50-15	600×50	1.5
CT-B90-GI-I-700-50-2	700×50	2
CT-B90-GI-I-800-50-2	800×50	2
CT-B90-GI-I-900-50-2	900×50	2
CT-B90-GI-I-1000-50-2	1000×50	2

REMARKS

Customized sizes are available.



4. Bend 45

ORDERING CODE	SIZE-WxH (mm)	THICKNESS (mm)
CT-B45-GI-I-50-50-1	50×50	1
CT-B45-GI-I-75-50-1	75×50	1
CT-B45-GI-I-100-50-1	100×50	1
CT-B45-GI-I-150-50-1	150×50	1
CT-B45-GI-I-200-50-1	200×50	1
CT-B45-GI-I-225-50-12	225×50	1.2
CT-B45-GI-I-250-50-12	250×50	1.2
CT-B45-GI-I-300-50-12	300×50	1.2
CT-B45-GI-I-400-50-15	400×50	1.5
CT-B45-GI-I-500-50-15	500×50	1.5
CT-B45-GI-I-600-50-15	600×50	1.5
CT-B45-GI-I-700-50-2	700×50	2
CT-B45-GI-I-800-50-2	800×50	2
CT-B45-GI-I-900-50-2	900×50	2
CT-B45-GI-I-1000-50-2	1000×50	2

REMARKS

Customized sizes are available.



5. Reducer Straight

ORDERING CODE	SIZE-W1xW2xH (mm)	THICKNESS (mm)
CT-RS-GI-I-100-50-50-1	100x50x50	1
CT-RS-GI-I-100-75-50-1	100x75x50	1
CT-RS-GI-I-150-100-50-1	150x100x50	1
CT-RS-GI-I-200-150-50-1	200x150x50	1
CT-RS-GI-I-225-150-50-12	225x150x50	1.2
CT-RS-GI-I-250-200-50-12	250x200x50	1.2
CT-RS-GI-I-300-250-50-12	300x250x50	1.2
CT-RS-GI-I-400-300-50-12	400x300x50	1.2
CT-RS-GI-I-500-400-50-15	500x400x50	1.5
CT-RS-GI-I-600-500-50-15	600x500x50	1.5
CT-RS-GI-I-700-600-50-15	700x600x50	1.5
CT-RS-GI-I-800-700-50-2	800x700x50	2
CT-RS-GI-I-900-800-50-2	900x800x50	2
CT-RS-GI-I-1000-900-50-2	1000x900x50	2
CT-RS-GI-I-1200-1000-50-2	1200x1000x50	2

REMARKS

Width-1 = Higher size
Width-2 = Lower size

•
Customized sizes are available.



6. Reducer Left

ORDERING CODE	SIZE-W1xW2xH (mm)	THICKNESS (mm)
CT-RL-GI-I-100-50-50-1	100x50x50	1
CT-RL-GI-I-100-75-50-1	100x75x50	1
CT-RL-GI-I-150-100-50-1	150x100x50	1
CT-RL-GI-I-200-150-50-1	200x150x50	1
CT-RL-GI-I-225-150-50-12	225x150x50	1.2
CT-RL-GI-I-250-200-50-12	250x200x50	1.2
CT-RL-GI-I-300-250-50-12	300x250x50	1.2
CT-RL-GI-I-400-300-50-12	400x300x50	1.2
CT-RL-GI-I-500-400-50-15	500x400x50	1.5
CT-RL-GI-I-600-500-50-15	600x500x50	1.5
CT-RL-GI-I-700-600-50-15	700x600x50	1.5
CT-RL-GI-I-800-700-50-2	800x700x50	2
CT-RL-GI-I-900-800-50-2	900x800x50	2
CT-RL-GI-I-1000-900-50-2	1000x900x50	2
CT-RL-GI-I-1200-1000-50-2	1200x1000x50	2

REMARKS

Width-1 = Higher size
Width-2 = Lower size

•
Customized sizes are available.



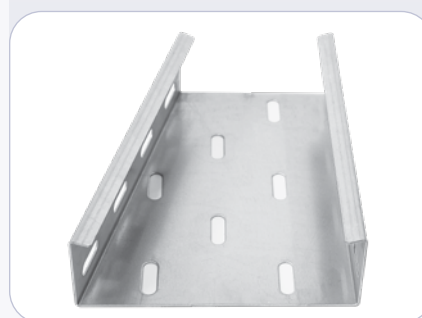
7. Reducer Right

ORDERING CODE	SIZE-W1xW2xH (mm)	THICKNESS (mm)
CT-RR-GI-I-100-50-50-1	100×50×50	1
CT-RR-GI-I-100-75-50-1	100×75×50	1
CT-RR-GI-I-150-100-50-1	150×100×50	1
CT-RR-GI-I-200-150-50-1	200×150×50	1
CT-RR-GI-I-225-150-50-12	225×150×50	1.2
CT-RR-GI-I-250-200-50-12	250×200×50	1.2
CT-RR-GI-I-300-250-50-12	300×250×50	1.2
CT-RR-GI-I-400-300-50-12	400×300×50	1.2
CT-RR-GI-I-500-400-50-15	500×400×50	1.5
CT-RR-GI-I-600-500-50-15	600×500×50	1.5
CT-RR-GI-I-700-600-50-15	700×600×50	1.5
CT-RR-GI-I-800-700-50-2	800×700×50	2
CT-RR-GI-I-900-800-50-2	900×800×50	2
CT-RR-GI-I-1000-900-50-2	1000×900×50	2
CT-RR-GI-I-1200-1000-50-2	1200×1000×50	2

REMARKS

Width-1 = Higher size
Width-2 = Lower size

• Customized sizes are available.



8. External Riser

ORDERING CODE	SIZE-WxH (mm)	THICKNESS (mm)
CT-ER-GI-I-50-50-1	50×50	1
CT-ER-GI-I-75-50-1	75×50	1
CT-ER-GI-I-100-50-1	100×50	1
CT-ER-GI-I-150-50-1	150×50	1
CT-ER-GI-I-200-50-1	200×50	1
CT-ER-GI-I-225-50-12	225×50	1.2
CT-ER-GI-I-250-50-12	250×50	1.2
CT-ER-GI-I-300-50-12	300×50	1.2
CT-ER-GI-I-400-50-15	400×50	1.5
CT-ER-GI-I-500-50-15	500×50	1.5
CT-ER-GI-I-600-50-15	600×50	1.5
CT-ER-GI-I-700-50-2	700×50	2
CT-ER-GI-I-800-50-2	800×50	2
CT-ER-GI-I-900-50-2	900×50	2
CT-ER-GI-I-1000-50-2	1000×50	2

REMARKS

Customized sizes are available.

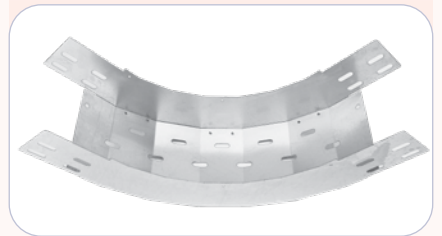


9. Internal Riser

ORDERING CODE	SIZE-WxH (mm)	THICKNESS (mm)
CT-IR-GI-I-50-50-1	50×50	1
CT-IR-GI-I-75-50-1	75×50	1
CT-IR-GI-I-100-50-1	100×50	1
CT-IR-GI-I-150-50-1	150×50	1
CT-IR-GI-I-200-50-1	200×50	1
CT-IR-GI-I-225-50-12	225×50	1.2
CT-IR-GI-I-250-50-12	250×50	1.2
CT-IR-GI-I-300-50-12	300×50	1.2
CT-IR-GI-I-400-50-15	400×50	1.5
CT-IR-GI-I-500-50-15	500×50	1.5
CT-IR-GI-I-600-50-15	600×50	1.5
CT-IR-GI-I-700-50-2	700×50	2
CT-IR-GI-I-800-50-2	800×50	2
CT-IR-GI-I-900-50-2	900×50	2
CT-IR-GI-I-1000-50-2	1000×50	2

REMARKS

Customized sizes are available.





CABLE TRUNKING

ORDERING CODE	SIZE-WxHxL (mm)	THICKNESS (mm)
CTR-GI-50-50-1	50×50×2440	1
CTR-GI-75-50-1	75×50×2440	1
CTR-GI-75-75-1	75×75×2440	1
CTR-GI-100-50-1	100×50×2440	1
CTR-GI-100-75-1	100×75×2440	1
CTR-GI-100-100-12	100×100×2440	1.2
CTR-GI-150-50-12	150×50×2440	1.2
CTR-GI-150-75-12	150×75×2440	1.2
CTR-GI-150-100-12	150×100×2440	1.2
CTR-GI-200-50-15	200×50×2440	1.5
CTR-GI-200-75-15	200×75×2440	1.5
CTR-GI-200-100-15	200×100×2440	1.5
CTR-GI-250-100-2	250×100×2440	2
CTR-GI-300-100-2	300×100×2440	2

REMARKS

Customized sizes are available.

Standard Couplers size is 180mm x side height of Tray.

Standard Hardware for coupling - M6 Bolt and nut with Washer.



1. Single Partition

ORDERING CODE	SIZE-WxHxL (mm)	THICKNESS (mm)
CTRSP-GI-50-50-1	50×50×2440	1
CTRSP-GI-75-50-1	75×50×2440	1
CTRSP-GI-75-75-1	75×75×2440	1
CTRSP-GI-100-50-1	100×50×2440	1
CTRSP-GI-100-75-1	100×75×2440	1
CTRSP-GI-100-100-12	100×100×2440	1.2
CTRSP-GI-150-50-12	150×50×2440	1.2
CTRSP-GI-150-75-12	150×75×2440	1.2
CTRSP-GI-150-100-12	150×100×2440	1.2
CTRSP-GI-200-50-15	200×50×2440	1.5
CTRSP-GI-200-75-15	200×75×2440	1.5
CTRSP-GI-200-100-15	200×100×2440	1.5
CTRSP-GI-250-100-2	250×100×2440	2
CTRSP-GI-300-100-2	300×100×2440	2

REMARKS
Customized sizes are available.



2. Double Partition

ORDERING CODE	SIZE-WxHxL (mm)	THICKNESS (mm)
CTRDP-GI-50-50-1	50×50×2440	1
CTRDP-GI-75-50-1	75×50×2440	1
CTRDP-GI-75-75-1	75×75×2440	1
CTRDP-GI-100-50-1	100×50×2440	1
CTRDP-GI-100-75-1	100×75×2440	1
CTRDP-GI-100-100-12	100×100×2440	1.2
CTRDP-GI-150-50-12	150×50×2440	1.2
CTRDP-GI-150-75-12	150×75×2440	1.2
CTRDP-GI-150-100-12	150×100×2440	1.2
CTRDP-GI-200-50-15	200×50×2440	1.5
CTRDP-GI-200-75-15	200×75×2440	1.5
CTRDP-GI-200-100-15	200×100×2440	1.5
CTRDP-GI-250-100-2	250×100×2440	2
CTRDP-GI-300-100-2	300×100×2440	2

REMARKS
Customized sizes are available.



CABLE TRUNKING ACCESSORIES

1. 90 Bend

ORDERING CODE	SIZE-WxH (mm)	THICKNESS (mm)
CTR-B90-GI-50-50-1	50×50	1
CTR-B90-GI-75-50-1	75×50	1
CTR-B90-GI-75-75-1	75×75	1
CTR-B90-GI-100-50-1	100×50	1
CTR-B90-GI-100-75-1	100×75	1
CTR-B90-GI-100-100-12	100×100	1.2
CTR-B90-GI-150-50-12	150×50	1.2
CTR-B90-GI-150-75-12	150×75	1.2
CTR-B90-GI-150-100-12	150×100	1.2
CTR-B90-GI-200-50-15	200×50	1.5
CTR-B90-GI-200-75-15	200×75	1.5
CTR-B90-GI-200-100-15	200×100	1.5
CTR-B90-GI-250-100-2	250×100	2
CTR-B90-GI-300-100-2	300×100	2

REMARKS

Customized sizes are available.



2. 45 Bend

ORDERING CODE	SIZE-WxH (mm)	THICKNESS (mm)
CTR-B45-GI-50-50-1	50×50	1
CTR-B45-GI-75-50-1	75×50	1
CTR-B45-GI-75-75-1	75×75	1
CTR-B45-GI-100-50-1	100×50	1
CTR-B45-GI-100-75-1	100×75	1
CTR-B45-GI-100-100-12	100×100	1.2
CTR-B45-GI-150-50-12	150×50	1.2
CTR-B45-GI-150-75-12	150×75	1.2
CTR-B45-GI-150-100-12	150×100	1.2
CTR-B45-GI-200-50-15	200×50	1.5
CTR-B45-GI-200-75-15	200×75	1.5
CTR-B45-GI-200-100-15	200×100	1.5
CTR-B45-GI-250-100-2	250×100	2
CTR-B45-GI-300-100-2	300×100	2

REMARKS

Customized sizes are available.

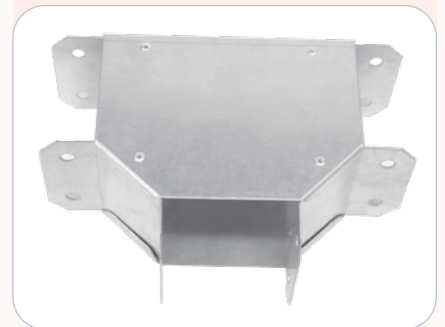


3. Tee Horizontal

ORDERING CODE	SIZE-WxH (mm)	THICKNESS (mm)
CTR-TH-GI-50-50-1	50×50	1
CTR-TH-GI-75-50-1	75×50	1
CTR-TH-GI-75-75-1	75×75	1
CTR-TH-GI-100-50-1	100×50	1
CTR-TH-GI-100-75-1	100×75	1
CTR-TH-GI-100-100-12	100×100	1.2
CTR-TH-GI-150-50-12	150×50	1.2
CTR-TH-GI-150-75-12	150×75	1.2
CTR-TH-GI-150-100-12	150×100	1.2
CTR-TH-GI-200-50-15	200×50	1.5
CTR-TH-GI-200-75-15	200×75	1.5
CTR-TH-GI-200-100-15	200×100	1.5
CTR-TH-GI-250-100-2	250×100	2
CTR-TH-GI-300-100-2	300×100	2

REMARKS

Customized sizes are available.

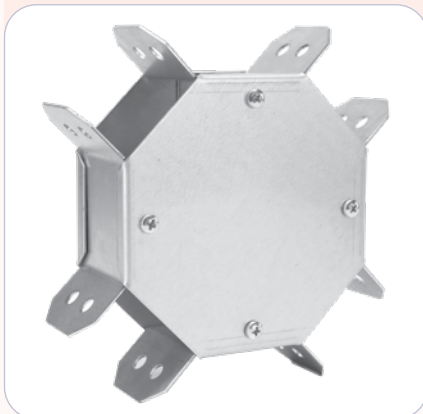


4. Cross Horizontal

ORDERING CODE	SIZE-WxH (mm)	THICKNESS (mm)
CTR-CH-GI-50-50-1	50×50	1
CTR-CH-GI-75-50-1	75×50	1
CTR-CH-GI-75-75-1	75×75	1
CTR-CH-GI-100-50-1	100×50	1
CTR-CH-GI-100-75-1	100×75	1
CTR-CH-GI-100-100-12	100×100	1.2
CTR-CH-GI-150-50-12	150×50	1.2
CTR-CH-GI-150-75-12	150×75	1.2
CTR-CH-GI-150-100-12	150×100	1.2
CTR-CH-GI-200-50-15	200×50	1.5
CTR-CH-GI-200-75-15	200×75	1.5
CTR-CH-GI-200-100-15	200×100	1.5
CTR-CH-GI-250-100-2	250×100	2
CTR-CH-GI-300-100-2	300×100	2

REMARKS

Customized sizes are available.



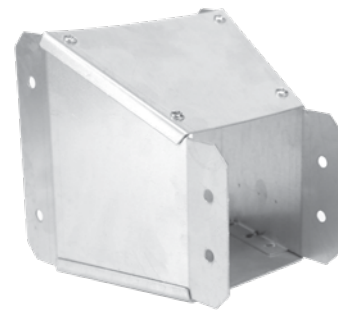
5. Straight Reducer

ORDERING CODE	SIZE-W1xW2xH (mm)	THICKNESS (mm)
CTR-SR-GI-100-50-50-1	100×50×50	1
CTR-SR-GI-100-75-50-1	100×75×50	1
CTR-SR-GI-100-75-75-1	100×75×75	1
CTR-SR-GI-150-100-50-1	150×100×50	1
CTR-SR-GI-150-100-75-1	150×100×75	1
CTR-SR-GI-150-100-100-12	150×100×100	1.2
CTR-SR-GI-200-100-50-12	200×100×50	1.2
CTR-SR-GI-200-150-50-12	200×150×50	1.2
CTR-SR-GI-200-150-75-12	200×150×75	1.2
CTR-SR-GI-250-200-50-15	250×200×50	1.5
CTR-SR-GI-250-200-75-15	250×200×75	1.5
CTR-SR-GI-250-200-100-15	250×200×100	1.5
CTR-SR-GI-300-200-100-2	300×200×100	2
CTR-SR-GI-300-250-100-2	300×250×100	2

REMARKS

Customized sizes are available.

•
Width-1 = Higher size,
Width-2 = Lower size

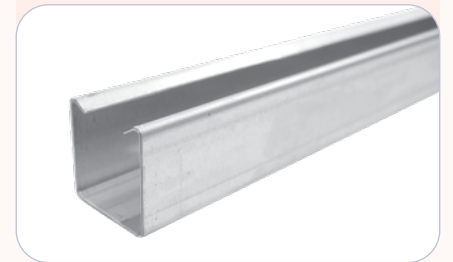




UNISTRUT (SUPPORT CHANNEL)

1. Plain

ORDERING CODE	SIZE-WxHxL (mm)	THICKNESS (mm)
USP-GI-41-21-12-2440	41×21×2440	1.2
USP-GI-41-21-15-2440	41×21×2440	1.5
USP-GI-41-21-2-2440	41×21×2440	2
USP-GI-41-41-12-2440	41×41×2440	1.2
USP-GI-41-41-15-2440	41×41×2440	1.5
USP-GI-41-41-2-2440	41×41×2440	2



2. Slotted



ORDERING CODE	SIZE-WxHxL (mm)	THICKNESS (mm)
USS-GI-41-21-12-2440	41×21×2440	1.2
USS-GI-41-21-15-2440	41×21×2440	1.5
USS-GI-41-21-2-2440	41×21×2440	2
USS-GI-41-41-12-2440	41×41×2440	1.2
USS-GI-41-41-15-2440	41×41×2440	1.5
USS-GI-41-41-2-2440	41×41×2440	2



إدارة توزيع الكهرباء
Electricity Distribution Directorate

FAX

5340/6.910/1456 /19/jb/190338
September 19th, 2019

Techno Electro Power Industries S.P.C.,
Attn: Mr. Bibin Bhasi, Managing Director Fax: 17-412845

Dear Sir,

**SUBJECT: EQUIPMENTS APPROVAL
CABLE TRAY & TRUNKING
MAKE: TECHNO ELECTRO POWER INDUSTRIES S.P.C. BAHRAIN**

Name of the Project: General

This refers to your reply mail dated 14th September 2019 along with test report. We have reviewed the same in conjunction with previous submittals and decided to approve the following items from manufacturer M/s Techno Electro Power Industries S.P.C, Bahrain:

- 1) Cable Tray(Heavy , Medium & Light Duty), hot dip galvanized & accessories.
- 2) Cable Trunking (hot dip galvanized) & accessories

The above approval is subject to the following:-

- 1) The approval for the pertinent item is valid for five years only.
- 2) It is the responsibility of the local agent to ensure the standards and specifications of the above approved articles.
- 3) Any alteration or changes to the specifications of the above items will invalidate this approval.
- 4) This approval does not entitle the contractor to hold Electricity Distribution Directorate responsible in the event of non-performance of the item.

Regards,



Khalid Jassim Mohamed Sowayed
Chief, Engineering Services

www.ewa.bh
P.O. Box: 2, Tel: (+973) 17901999, Fax: (+973) 17728466 | (+973) 17728466 (تلفون) (+973) 17728466 (فاكس)

Globus Certificate of Registration



Certificate of Registration

GCPL hereby certifies that

IAF EA Code-19 Reg. No.: AB100XXIX02020373

TECHNO ELECTRO POWER INDUSTRIAL S.P.C.
Building 765, Road 4811, Block 948, Lhassay Area, Kingdom of Bahrain

has been independently assessed and is compliant with the requirement of

ISO 9001:2015 Quality Management System

This certificate is applicable to the following product or service ranges:

Manufacturing of "Techno Electro Power" PVC Conduits & Fittings, LV Panels, Distribution Boards, Control Panels, GI & Hot Dip Electrical Cable Tray, GI & Hot Dip Electrical Cable Trunk, Switch Disconnector, Changeover in Enclosure, PVC Switches & Sockets.

Initial Issue Date : 29. Oct. 2020	Issue Date : 29. Oct. 2020
Expiry Date : 28. Oct. 2023	Valid Period : 29. Oct. 2020 - 28. Oct. 2021

*Certificate validity is subject to clearing successful surveillance audit.





Signed for and on behalf of GCPL

UAF is a Full Member of International Accreditation Forum (IAF)
United Accreditation Foundation Inc 400 North Center DR STE 202 Norfolk, VA 23502 United States of America
To verify the validity of this certificate please visit: www.uaafaccreditation.org. Surveillance audits shall be conducted at least once a calendar year, except in re-certification years. This is to certify that the Management Systems of this company has been found to conform to the above. If the certified client does not allow surveillance, re-certification audits, certificate should be returned to GCPL. This certificate remains the property of GCPL and this certificate is recognized by GCPL.
Globus Certifications Pvt. Ltd. / Web-www.globuscertifications.com / E-mail:sales@globuscertifications.com





TECHNO ELECTRO POWER INDUSTRIAL W.L.L.

(An ISO 9001 Certified Company)

Building 765, Road 4811, Block 948, Lhassay Area, Kingdom of Bahrain
M +973 3975 9175 • T +973 7709 0218



info@tepgi.com



www.tepgi.com

